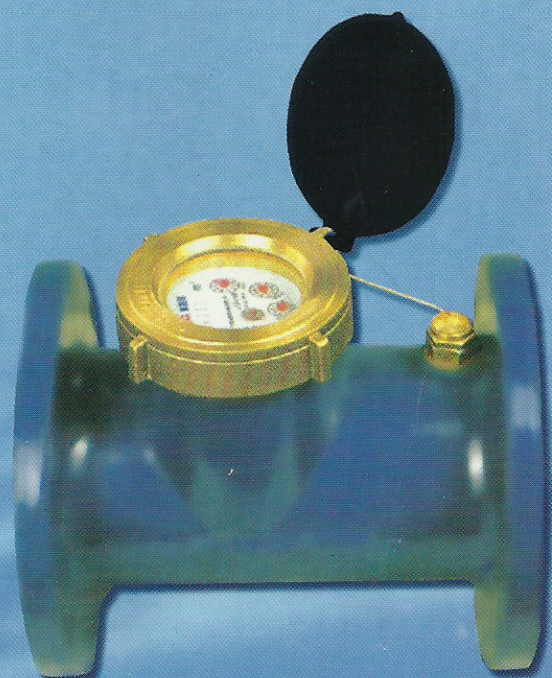




# AMICO ROTARY - WING WATER METER

## HORIZONTAL WOLTMAN TYPE WATER METER



**TYPE LXL 80 - 300 E**

### Special Features :

- Digital-Wheel counter mechanism for direct reading
- Large range for measuring, good accuracy in flowrate
- High continuous flow capacity, lower head loss
- Steady curve characteristics
- Performance of type LXL water meter is up to standard ISO 4064 B

### Meter Design :

- Solid and robust design, long service guaranteed
- Selected high quality materials guarantee absolute corrosion resistance
- Universal interchangeable measuring insert
- Outer calibration device

### Metrological Data

Meter Size DN mm	Measuring Class	Nominal Flowrate Q <sub>n</sub> m <sup>3</sup> /h	Minimum Flowrate Q <sub>min</sub>	Transitional flowrate Q <sub>t</sub>	Min. reading	Max. reading
			m <sup>3</sup> /h		m <sup>3</sup>	
50	A	15	1.2	4.5	0.01	999999.99
	B		0.45	3		
80	A	40	3.2	12		
	B		1.2	8		
100	A	60	4.8	18		
	B		1.8	12		
150	A	150	12	45	0.1	999999.99
	B		4.5	30		
200	A	250	20	75		
	B		7.5	50		



**TYPE LXS 50 E**

### Working Condition :